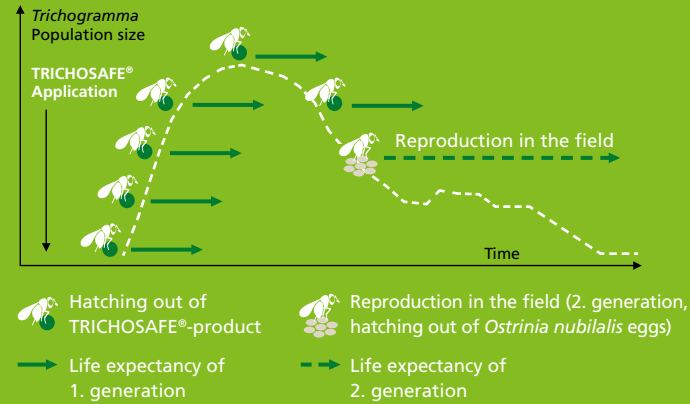
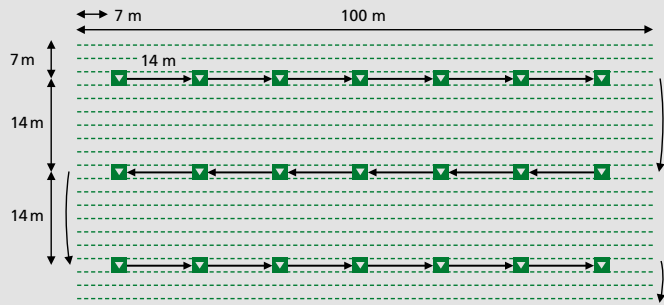


Scheme 2: Manual application of TRICHOSAFE®-cards
in case of average infestation: 2 bundles with 25 cards/ha



Long effective period

By integrating six hatching phases, a long hatching period of up to three weeks is achieved:

- All TRICHOSAFE®-Products contain different development stages of host eggs parasitized by *Trichogramma*
- An additional mini breed is integrated with added non-parasitized *Sitotroga* host eggs

Storage and Transportation

- Application as soon as possible after delivery.
- Storage of max. 48 h at 10–15°C and 70% rh.
- Please protect against extreme temperature influences!
- *Trichogramma* respond very sensitive to nicotine!

Scope of application	Dosage/ha	Number of organisms/ha
Low infestation, Biogas/silage maize	1 x 30 cards	Min. 220.000
Standard-version for average infestation	2 x 50 cards	Min. 220.000
Standard-version for average infestation	2 x 100 capsules	Min. 220.000
High infestation, second generation	1 x 50 cards plus 1 x 100 capsules	Min. 110.000 plus min. 220.000

Your Benefits

- No residues
- No resistances
- No application constraints
- Positive image
- Good service at fair prices

Quality Guarantee

The annual quality assessments of the states' advisory centers and the JKI confirm the convincing product quality of TRICHOSAFE® in field trials and laboratory experiments. The amount of delivered Trichogramma per hectare and the female ratio are significantly above the official recommendations. This additionally ensures the efficacy of our products. Long-term experience in production, research and development permanently secure the optimization of our high-effective products.

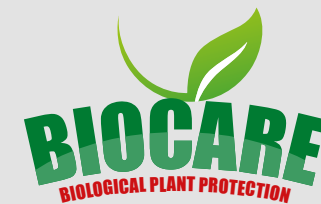
TRICHOSAFE® is listed in FiBL's (Research Institute of Organic Agriculture) as a biological plant protection product.



BIOCARE is certified member in the International Biocontrol Manufacturers' Association



BIOCARE receives research funding from: The ZIM Central Innovation Programme for SMEs



BIOCARE Gesellschaft für Biologische Schutzmittel mbH
Dorfstr. 4 ■ D-37574 Einbeck ■ Tel. (0 55 62) 95 05 78-0
Fax (0 55 62) 95 05 78-9 ■ E-Mail: info@biocare.de ■ www.biocare.de



connect, Einbeck, 2016

TRICHOSAFE®

Best biological protection against the corn borer



TRICHOSAFE®-Cards

TRICHOSAFE®-Capsules



Made in Germany



Pictures above: Yield damage caused by corn borer

Picture right: TRICHOSAFE®-cards in a corn field

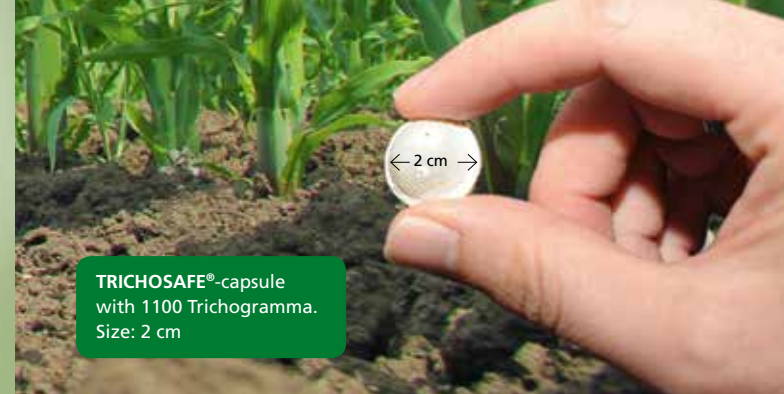
Pictures below: TRICHOSAFE®-capsule application with a stilt tractor and a drone



Efficient corn borer control with TRICHOSAFE®



Trichogramma parasitizing a host egg.
Size: < 0.5 mm



TRICHOSAFE®-capsule with 1100 Trichogramma.
Size: 2 cm



Optimal protection of Trichogramma until hatching against weather effects and predators. Size: 8 x 8 cm

Every year, the European Corn Borer (*Ostrinia nubilalis*) causes substantial damage in corn fields. The result: Loss in revenue and loss in quality due to high contents of mycotoxin. Our solution: The ichneumon fly *Trichogramma brassicae* as a very efficient and natural enemy of the corn borer.

The *Trichogramma*-females parasitize the majority of the corn borer eggs: they put their eggs into the eggs of the corn borer. As a result, the *Trichogramma* instead of the corn borer will develop in the corn borer eggs. After hatching, the new *Trichogramma* will parasitize even more corn borer eggs.

Application Date

The ministerial offices will determine the application date in consideration of the:

- Accumulated temperature
- Catches in the light traps

The first application is, depending on the region, between mid of June and beginning of July, the second approximately 14 days later.

TRICHOSAFE®-Capsule

- Made of pulp and paraffin, it is completely biodegradable under field conditions
- Manual and mechanical application possible
- Proven packaging for efficient and wide-scale distribution with ball thrower (mounted on stilt tractor approx. 20 ha/h at 10 km/h) and aircrafts (approx. 10 ha/h).

Easy manual application:

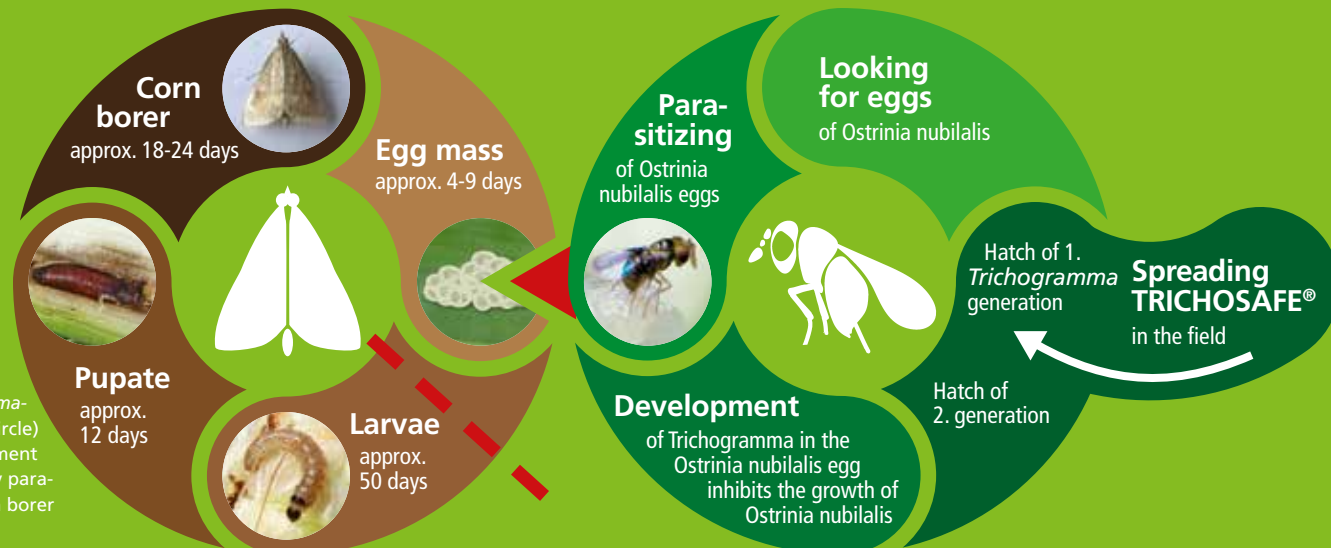
The standard version contains one bag of 100 TRICHOSAFE®-Capsules per hectare and application. In the field you open the bag and distribute the capsules according to the following scheme evenly on the site.

TRICHOSAFE®-Cards

- For 20 years successfully applied in the fields
- Easy and fast manual application
- Optimal protection of Trichogramma until hatching against weather effects and predators
- Size: 8 x 8 cm

Easy manual application:

You simply open the paper-banderole and append the cards according to the following scheme to the leaf axils (Scheme 1 and 2).



The *Trichogramma*-females (right circle) stops development of corn borer by parasitizing the corn borer eggs (left circle)

