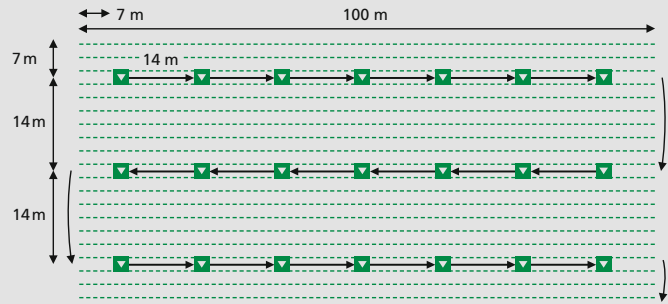


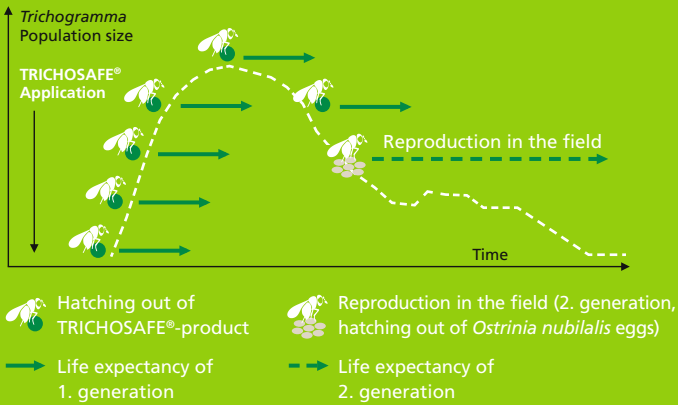
▼ Scheme 2: Manual application of TRICHOSAFE®-cards in case of average infestation: 2 bundles with 25 cards/ha



Pictures above: Yield damage caused by corn borer

Picture right: TRICHOSAFE®-cards in a corn field

Pictures below: TRICHOSAFE®-capsule application with a stilt tractor and a drone



Long effective period

By integrating six hatching phases, a long hatching period of up to three weeks is achieved:

- All TRICHOSAFE®-Products contain different development stages of host eggs parasitized by *Trichogramma*
- An additional mini breed is integrated with added non-parasitized *Sitotroga* host eggs

Storage and Transportation

- Application as soon as possible after delivery.
- Storage of max. 48 h at 10–15°C and 70% rh.
- Please protect against extreme temperature influences!
- *Trichogramma* respond very sensitive to nicotine!

Quality guarantee

The annual official independent quality tests confirm the convincing quality of TRICHOSAFE® in field and laboratory tests. The number of parasitic wasps supplied per hectare and the percentage of females are well above the official recommendation. This ensures additional efficacy reliability. Many years of experience in production, research and development are permanently incorporated into the optimisation of our highly effective products. TRICHOSAFE® is a FiBL (Research Institute of Organic Agriculture) listed product.

Your advantages

- Safe and high effect
- Gentle on beneficial insects
- No resistances
- No application requirements
- Environmentally friendly and fully biodegradable packaging
- Flexible customer service for you
- Positive image for you and your agriculture

Product variants

Our diverse product variants enable you to optimally protect your maize crop in every infestation situation.

Scope of application	Dosage/ha	Number of organisms/ha
Low infestation, Biogas/silage maize	1 x 30 cards	Min. 220.000
Standard-version for average infestation	2 x 50 cards	Min. 220.000
Standard-version for average infestation	2 x 100 capsules	Min. 220.000
High infestation, second generation	1 x 50 cards plus 1 x 100 capsules	Min. 110.000 plus min. 220.000



BIOCARE is certified member in the International Biocontrol Manufacturers' Association



BIOCARE Gesellschaft für biologische Schutzmittel mbH
Wellerser Str. 57 ■ D-37586 Dassel ■ Tel. (0 55 62) 95 05 78-0
Fax (0 55 62) 95 05 78-9 ■ E-Mail: info@biocare.de ■ www.biocare.de



TRICHOSAFE®

Experience and quality
for more than 25 years

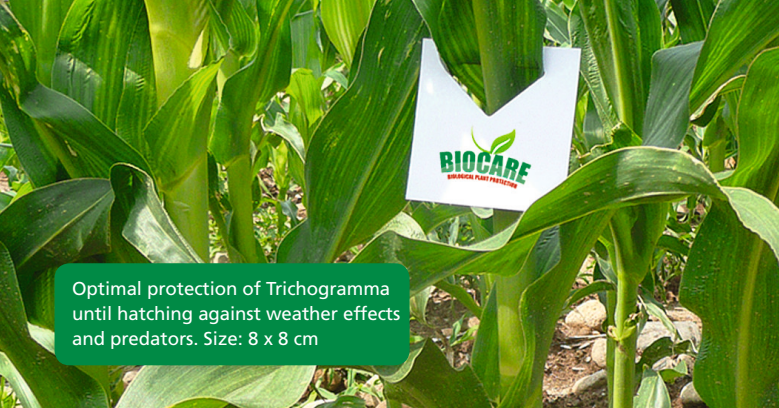
TRICHOSAFE®-Cards

TRICHOSAFE®-Capsules



Made in Germany

Efficient
corn borer
control with
TRICHOSAFE®



Every year, the European Corn Borer (*Ostrinia nubilalis*) causes substantial damage in corn fields. The result: Loss in revenue and loss in quality due to high contents of mycotoxin. Our solution: The ichneumon fly *Trichogramma brassicae* as a very efficient and natural enemy of the corn borer.

The *Trichogramma*-females parasitize the majority of the corn borer eggs: they put their eggs into the eggs of the corn borer. As a result, the *Trichogramma* instead of the corn borer will develop in the corn borer eggs. After hatching, the new *Trichogramma* will parasitize even more corn borer eggs.

Application Date

The ministerial offices will determine the application date in consideration of the:

- Accumulated temperature
- Catches in the light traps

The first application is, depending on the region, between mid of June and beginning of July, the second approximately 14 days later.

TRICHOSAFE®-Capsule

- Made of pulp, it is completely biodegradable under field conditions
- Manual and mechanical application possible
- Proven packaging for efficient and wide-scale distribution with ball thrower (mounted on stilt tractor approx. 20 ha/h at 10 km/h) and aircrafts (approx. 10 ha/h).

Easy manual application:

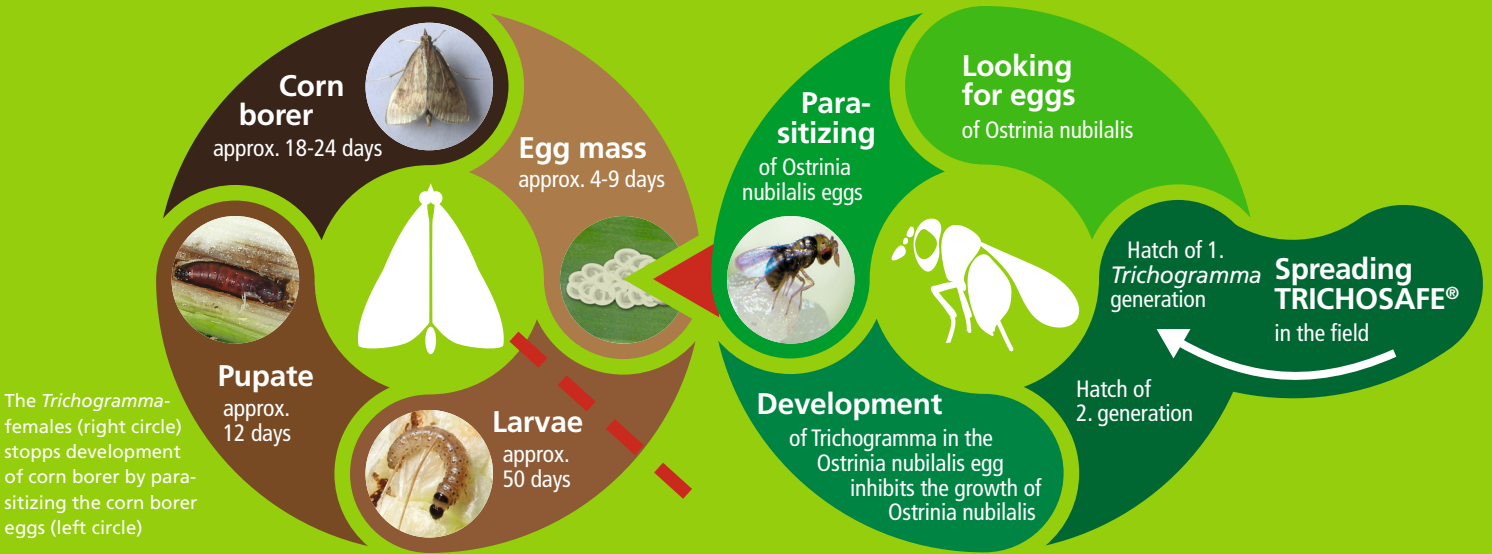
The standard version contains one box of 100 TRICHOSAFE®-Capsules per hectare and application. In the field you open the box and distribute the capsules according to the following scheme evenly on the site.

TRICHOSAFE®-Cards

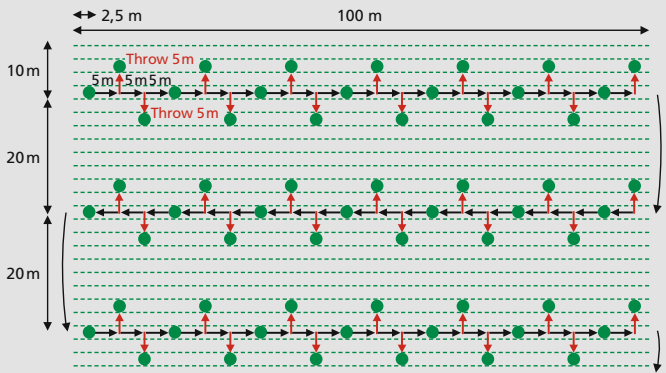
- For 20 years successfully applied in the fields
- Easy and fast manual application
- Optimal protection of Trichogramma until hatching against weather effects and predators
- Size: 8 x 8 cm

Easy manual application:

You simply open the paper-banderole and append the cards according to the following scheme to the leaf axils (Scheme 1 and 2).



Scheme: Manual application of TRICHOSAFE®-capsules (100 capsules/ha)



Scheme 1: Manual application of TRICHOSAFE®-cards in case of low infestation: 1 bundle with 30 cards/ha

